



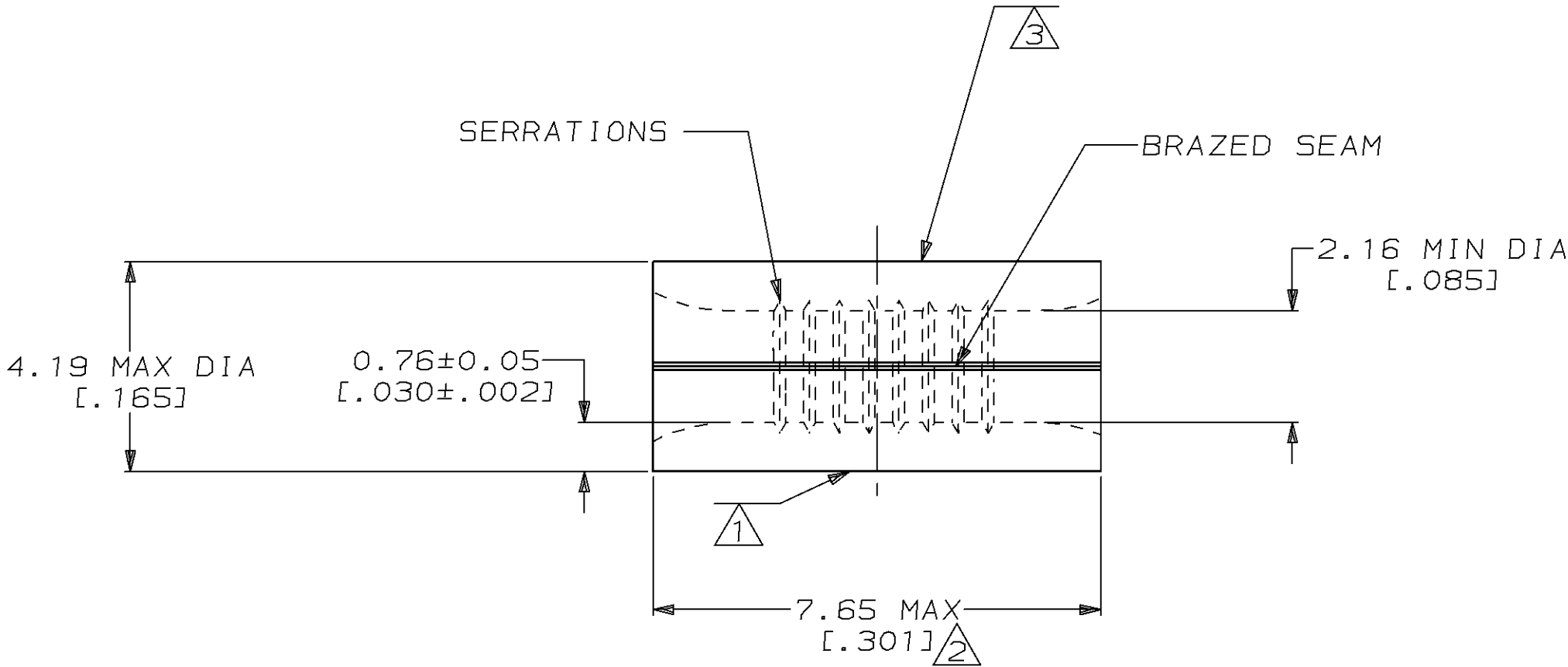
LOC		DIST						REVISIONS		
G		14		P	F	ZONE	LTR	DESCRIPTION	DATE	APPD
							G	REVISED PER 0720-0048-94	6/15/94	OKS DAP

METRIC

DIMENSIONS LISTED IN mm [INCHES]

AMP WIRE RANGE	 E13288 Listed
16-14 AWG SOLID OR STRANDED	NOT APPLICABLE
 LR7189 Certified	MILITARY P/N AND CLASS
NOT APPLICABLE	NOT APPLICABLE

- 1 STAMP AMP 16-14 APPROX AS SHOWN
- 2 MAXIMUM LENGTH DOES NOT INCLUDE
MANUFACTURING TABS
- 3 WIRE BARREL COLOR CODED ORANGE
TO DENOTE NICKEL MATERIAL



50	LOOSE PIECE, BOX	8-322347-2
-	LOOSE PIECE	1-322347-0
-	LOOSE PIECE	322347
QTY	PACKAGE TYPE	PART NO
AMP AMP Incorporated Harrisburg, PA 17105-3608		
NAME SPLICE, PARALLEL, HIGH TEMPERATURE, STRATO-THERM™		
SIZE C	CAGE CODE 00779	DRAWING NO C=322347
SCALE 10:1	SHEET 1 OF 1	

AMP INCORPORATED CUSTOMER SERVICE SYSTEMS		MAX RECOMMENDED OPERATING TEMPERATURE: 649°C MAX
FOR ADDITIONAL PRODUCT INFORMATION OR COPIES OF DRAWINGS AND TECHNICAL DOCUMENTS	PRODUCT INFORMATION CENTER 1-800-522-6752	VOLTAGE RATING: NOT APPLICABLE
FOR APPLICATION TOOLING INFORMATION	TOOLING ASSISTANCE CENTER 1-800-722-1111	WIRE CROSS SECTIONAL AREA RANGE: 1.04-2.62mm² [2,050-5,180] CIR MILS SOLID OR STRANDED
FOR ORDER ENTRY	1-800-526-5142	THIS DRAWING IS A CONTROLLED DOCUMENT FOR AMP INCORPORATED. IT IS SUBJECT TO CHANGE AND THE CONTROLLING ENGINEERING ORGANIZATION SHOULD BE CONTACTED FOR THE LATEST REVISION.

DO NOT SCALE PRINT. UNLESS SPECIFIED DIMENSIONS IN mm [INCHES] TOLERANCES ON :	DR 4-19-93 TA BRINKMAN
2 PLC DEC ± -	CHK 4-19-93 DA PATTERSON
3 PLC DEC ± -	APPD 4-19-93 DE MILLER
ANGLES ± -	APPD 4-19-93 JL MECKLEY
MATERIAL NICKEL PER ASTM B-162 ANNEALED	PRODUCT SPEC -
FINISH -	APPLICATION SPEC -
	WEIGHT -